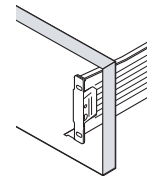
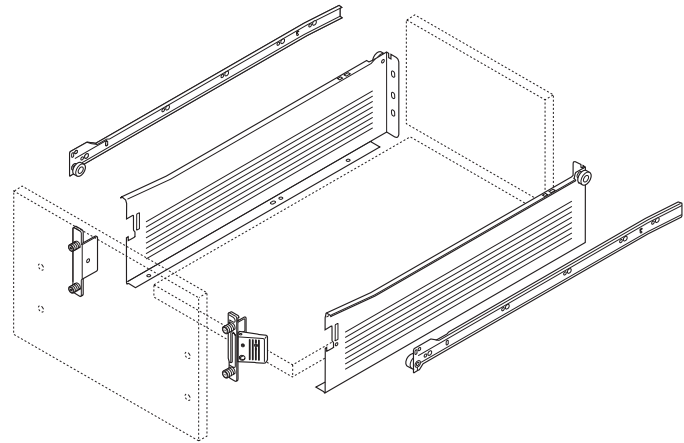
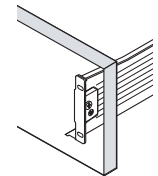


# Drawer adjustments

## METABOX series (See inside for adjustments.)



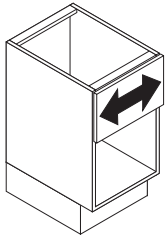
Clip on



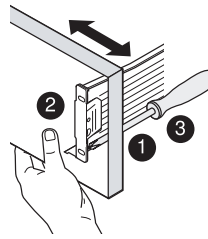
screw on

**Blum, Inc.**  
7733 Old Plank Rd.  
Stanley, NC 28164  
toll free 800-438-6788  
local 704-827-1345  
fax 704-827-0799  
internet www.blum.us

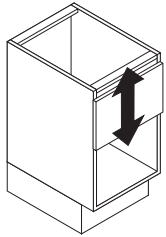
Side adjustment



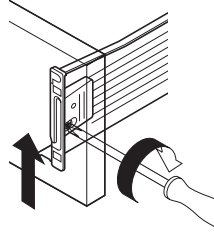
1. Loosen 2 screws on each bracket that attach front.
  2. Adjust drawer front.
  3. Tighten screws.
- Range = 1/8" (3mm)**



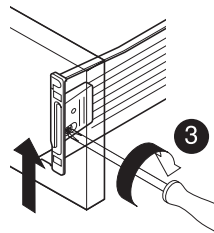
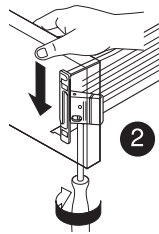
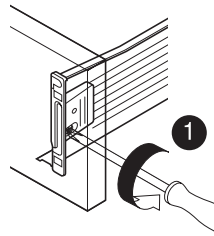
Height adjustment



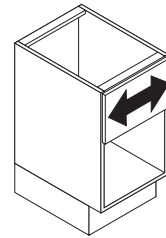
Height Up:  
Rotate adj. cam.



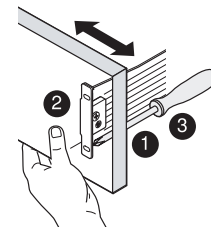
- Height Down:
1. Back off height adj. cam
  2. Open cover with POZI driver and push drawer front down, close cover.
  3. Rotate cam to bring drawer front up into position.



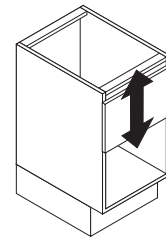
Side adjustment



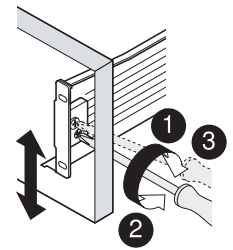
1. Loosen 2 screws on each bracket that attach front.
  2. Adjust drawer front.
  3. Tighten screws.
- Range = 1/8" (3mm)**



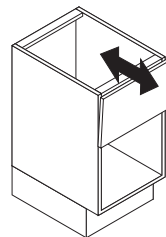
Height adjustment



1. Loosen top fixing screw on bracket.
  2. Turn bottom cam screw to adjust height.
  3. Tighten fixing screw.
- Range = 5/32" (4mm)**



Tilt adjustment



For taller drawer with gallery rails.

Turning the rails by hand extends or reduces their length which tilts the drawer front.

